

THE 
ananta
A S P I R E





BE IN
A SPACE
WITH
ENDLESS
POSSIBILITIES

Live A Good Life!





INTRODUCING A WHOLE NEW WAY TO **A GOOD LIFE**

At The Ananta Aspire we don't build walls around aspirations but open up unending vistas. Spread over 34,050 square yards, The Ananta Aspire promises to blend luxury, comfort, style and technology to create happy homes. This upcoming high-rise project on Zirakpur–Patiala Highway will be an architectural milestone—an oasis of **17-floor towers** with not more than two apartments on each floor. For the select few who want to experience the freshness and serenity of countryside right in the middle of a buzzing place, these spacious apartments are the answer. With the foundation laid for **440 apartments**, The Ananta Aspire offers an exclusive inventory of **4+1, 3+1 and 3 BHK** with a utility room.

LOCATION



These are the google coordinates of The Ananta Aspire, a strategically located address with easy accessibility and connectivity with all the link roads. Coming up on the most-sought-after Zirakpur–Patiala Highway, the place offers easy access to all important facilities and city hubs. While a right turn from the property will take you to Chandigarh and Panchkula, a left will lead you to Mohali's Phase 7, the new lifeline of Tricity.

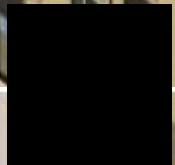
NEARBY ATTRACTIONS:

HLP Social Square	01 Minute	Mohali International Airport	15 Minutes
Radisson	Just Opposite	Walmart	10 Minutes
Mohali City Square	Just Opposite	Elante Mall	15 Minutes
HP Petrol Pump	Adjoining	JP Hospital	05 Minutes
VIP Road	05 Minutes	St Xaviers School	10 Minutes
AMCARE Hospital	05 Minutes	Railway Station	15 Minutes



THE
ananta
 ASPIRE

Map is not as per scale.



THE ANANTA ASPIRE

OFFICE



Live A
Good Life!

FULLY AUTOMATED HOMES FOR A SMARTER LIVING

When the world today is all about Internet of Things (IoT), how can your home be smart enough without this latest technology? Team The Ananta Aspire brings the technology for a smarter living that is by far the best in the world for fully automated homes. Now you shall be able to control your home from anywhere at the click of a button through a network of connected devices. Our team shall be more than willing to explain every technological function that can make daily life super easy in your apartment at The Ananta Aspire. Some of the smart features of The Ananta apartments are:

- Voice Control
 - Light Control
 - AC Temperature Control
 - Access & Security Control
- Time Based Event Control
 - Presence & Motion Sensors
 - Touch Panels & Mobile App





THE DOUBLE ADVANTAGE OF DUAL CORE PROJECT



Imagine the morning light streaming quietly into your room; winter sun warming up your hearts; cool breeze and fresh air flowing through your house; a monsoon shower spraying its freshness on your face as you sip your tea! Well, all this is possible if your home is open from two directions and has large balconies. At The Ananta Aspire you can get the feel of a villa in an apartment! We call it the dual-core project—only two apartments on each floor, where every apartment is park facing and open from both sides. So you will have the dual benefit of ventilation and green view, an unparalleled way of life in today's otherwise small and closed-in community living options.



TIME-TESTED QUALITY

House construction is a task that demands attention to the last detail. Having delivered more than 500 units in our previous projects, we have learned and unlearned many aspects of construction which form the basis of the choices we make today. We understand the need for time-tested brands and the importance of the quality of each material used in construction. The idea of creating a luxury apartment can never be conceived and delivered without paying utmost attention to every material and brand used in constructing a building.

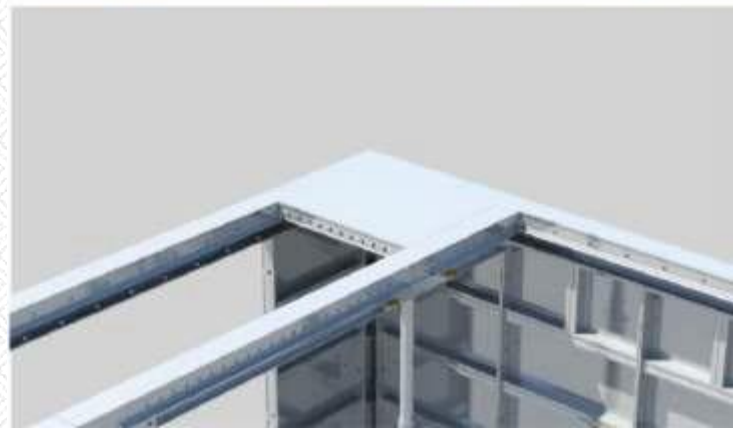
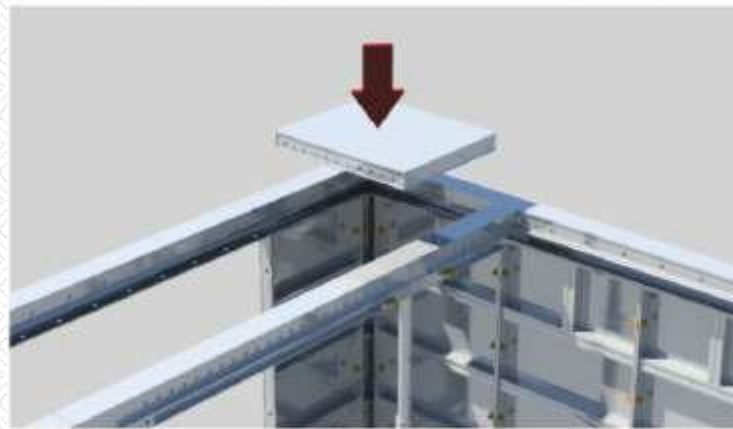
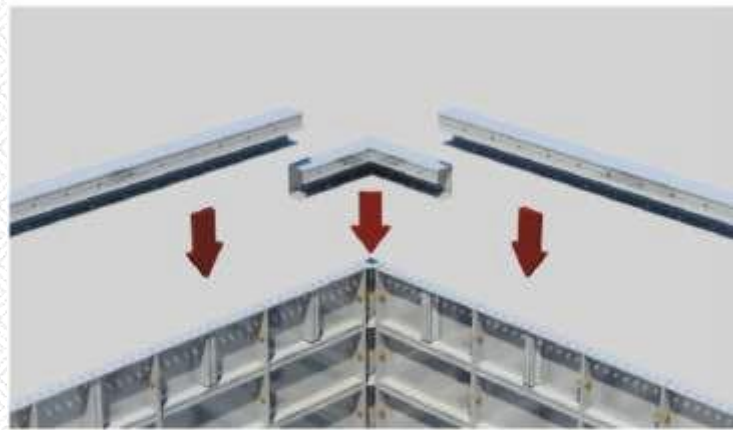


MIVAN CONSTRUCTION

With a goal to provide sturdy and sustainable homes, The Ananta Aspire chose MIVAN technology for construction. It is a new-age construction technique that offers strength and durability to the structure.

Some of the key benefits of the MIVAN construction technology are:

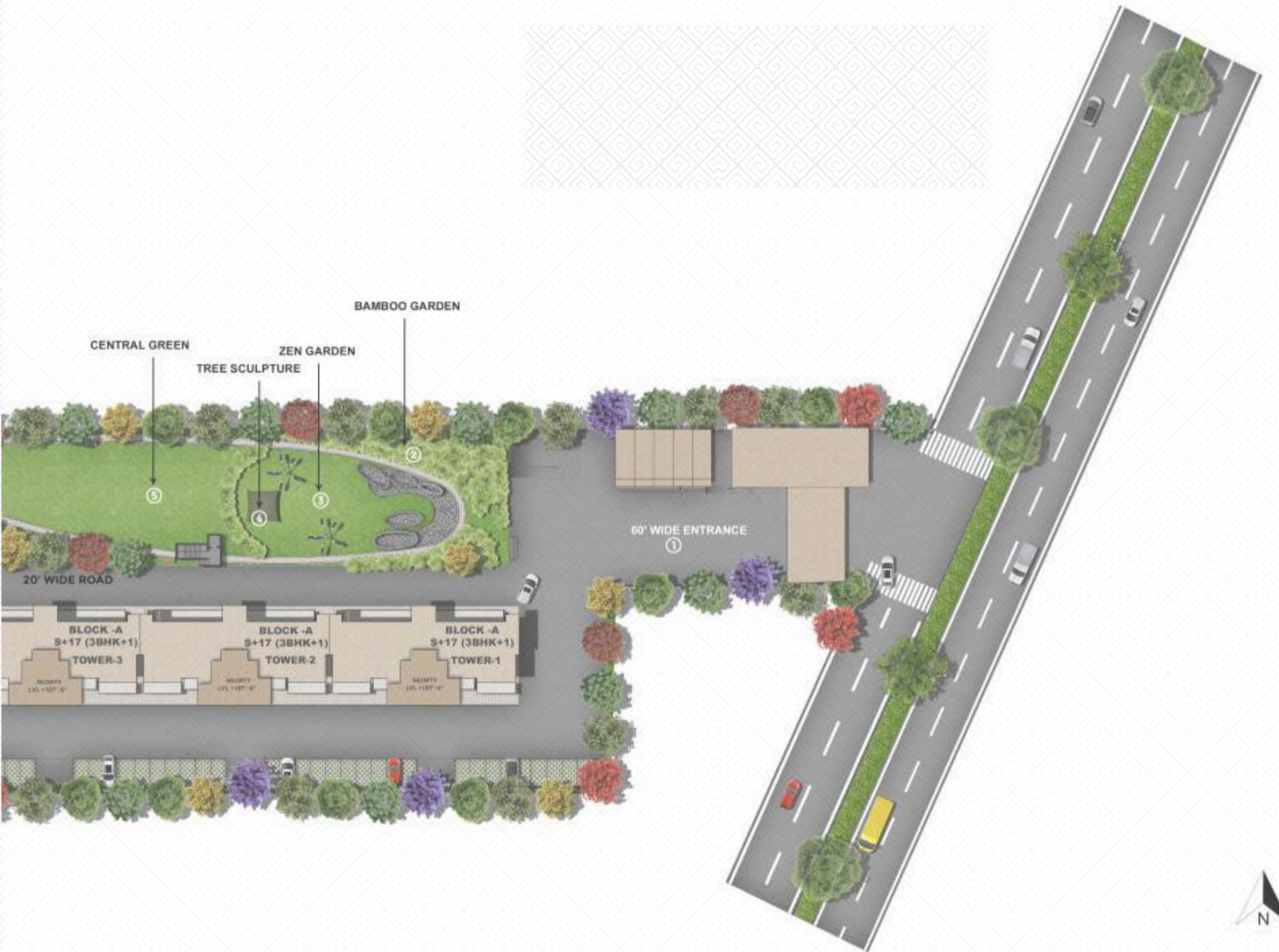
- No efflorescence on the walls.
- No seepage in the walls.
- Smooth finishing on walls and no efflorescence, so the maintenance cost would be low.
- Lesser number of joints. Hence, less chances of leakage and seepage in the walls.
- Building is more durable and resistant to earthquakes.
- Beam construction and column area removed; you can enjoy more carpet area.



Live A Good Life!



- | | | | | | |
|-------------------|-------------------------------|-----------------------|-----------------------|-----------------------|-------------------|
| 1. ENTRANCE | 6. SENIOR CITIZEN GARDEN | 11. WATER FEATURE | 16. TENSILE STRUCTURE | 21. SKATING RINK | 26. PRACTICE WALL |
| 2. BAMBOO GARDEN | 7. OUTDOOR LANDSCAPED SITTING | 12. CENTRAL PLAZA | 17. PET GARDEN | 22. LAWN TENNIS COURT | |
| 3. ZEN GARDEN | 8. PEDESTRIAN WALKWAY | 13. CLOUD FOREST | 18. GREEN WALL | 23. VOLLEYBALL COURT | |
| 4. TREE SCULPTURE | 9. KID'S PLAY AREA | 14. CLUBHOUSE | 19. CYCLE TRACK | 24. BADMINTON COURT | |
| 5. CENTRAL GREEN | 10. GAZEBO | 15. RECREATIONAL AREA | 20. PARTY LAWN | 25. CRICKET PITCH | |



Master Plan

AT THE ANANTA ASPIRE
THERE IS UNLIMITED
SUPPLY OF LOVE AND CARE;

WE HAVE SOMETHING
FOR EVERYONE

- CENTRAL PARK
- CLUBHOUSE
- SPORTS ARENA
- INFINITY POOL
- EV CAR CHARGING POINTS
- 3 TIER SECURITY SYSTEM
- AMPLE PARKING SPACE
- SEPARATE PET FRIENDLY ZONE

and many more...









CENTRAL PARK

Can you imagine a different park each for your child, your parent and yourself? The Ananta Aspire has theme-based parks designated for different age groups—an open expanse of green cover for everyone to unwind, rejuvenate and establish a connection with nature. The Central Park includes:

- Senior Citizen Area
- Kids' Play Area
- Bamboo Garden
- Zen Garden
- Water Body
- Amphitheatre







CLUBHOUSE

Your evenings will become memorable at our Clubhouse which has varied options of recreation and relaxation. A well thought out and an appealing set up has been planned for the Clubhouse at The Ananta Aspire keeping in mind the wellbeing of its residents. Some of the features at Clubhouse are:

- Gym
- Spa
- Conference Room
- Salon
- Table Tennis Room
- Billiards Room
- Reading Room
- Coffee Shop
- Yoga and Aerobics Room
- Banquet Hall







SPORTS ARENA

We care for your fitness, recreation and wellbeing and that's why we have constructed a separate sports arena for you to stay in the best of shape. We have the following sports amenities to keep the adrenal and fun factor rushing:

- Cricket Pitch
- Lawn Tennis Court
- Badminton Court
- Skating Rink
- Volleyball Court







ROOF TOP POOL



There will be a rooftop pool—just above the Clubhouse—to calm your nerves after a hectic day. Our focus area here is to maintain hygiene by changing pool water at regular intervals and keep the surroundings neat and clean. It would be a perfect spot to bring your children and friends to beat the heat and shed some calories as well.





EV CAR CHARGING POINTS



This futuristically planned project encapsulates its vision of making life swift and smart for its residents. Fully equipped with modern technology for smart homes, the project also has provisions for charging electric vehicles (EV). Be ready to shift gear to the most comfortable life at the most prestigious place.



3-TIER SECURITY SYSTEM



Your safety and protection is paramount to us. We have adopted a 3-tier security system all around the complex. This multi-layered security helps in plugging loopholes, if any. Experience a luxurious and safe lifestyle without any fear or worry.





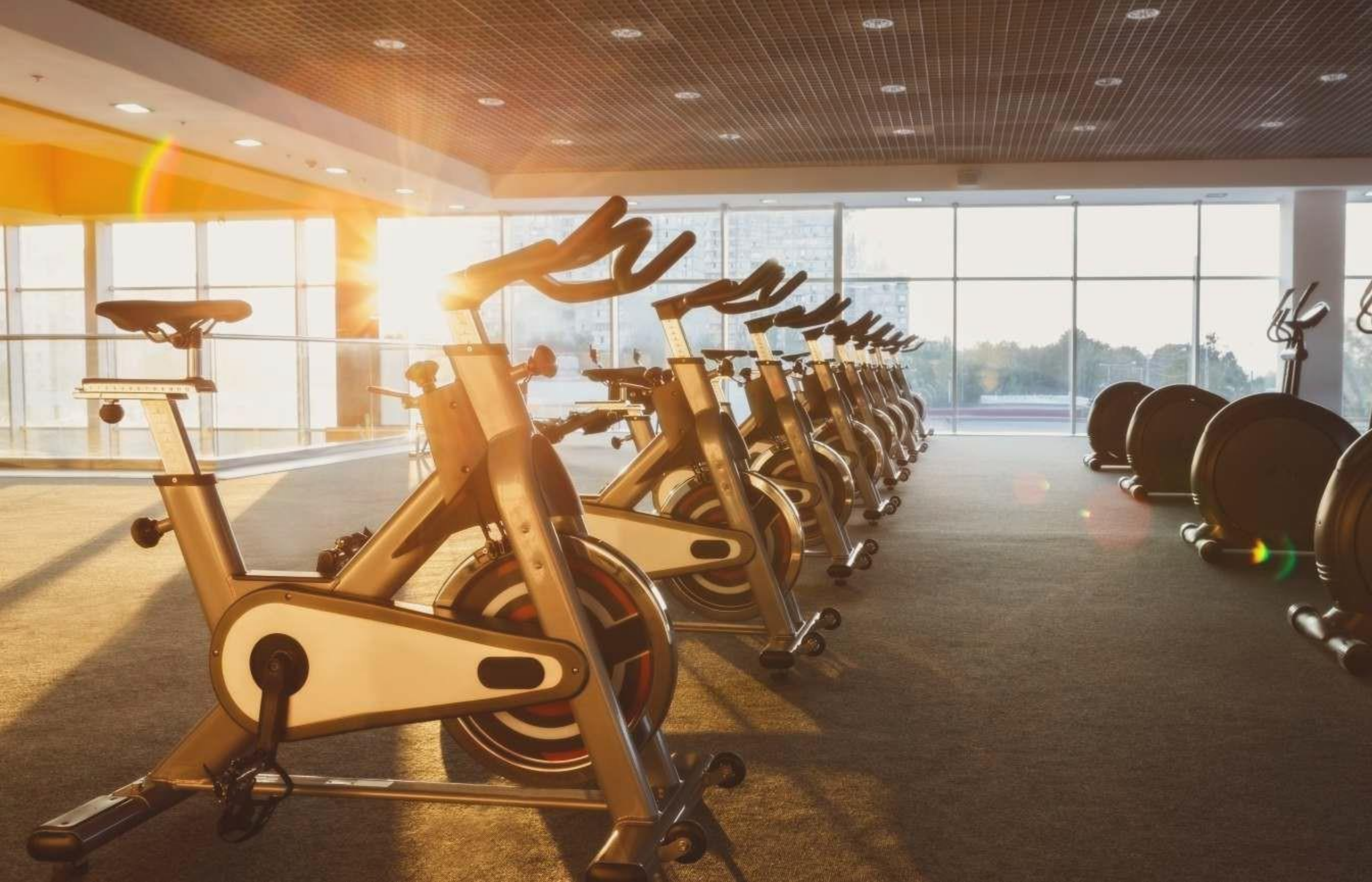
AMPLE **PARKING** SPACE



A quarrel every now and then over parking is so not Ananta style of living. Our project has ample parking space for not only the residents but also their guests and visitors.

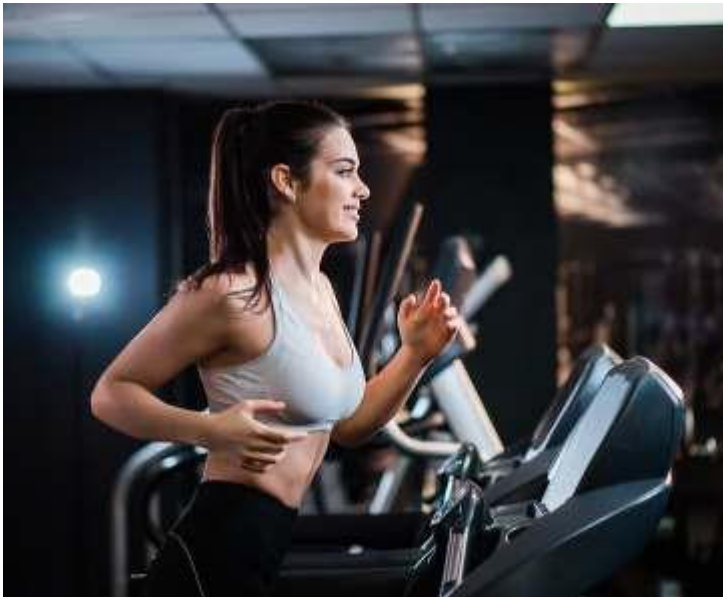
Parking Levels:

- Stilt Parking
- Shaded Car Parking
- Basement Parking





GYMNASIUM



At The Ananta Aspire, we put fitness first. Make no excuse when it comes to your health. If you can't go to a gym, we will bring the gym to you. At The Ananta Aspire, you can exercise at your own pace and save the commute time by stepping out of your apartment and into our state-of-the-art, swanky and fully equipped gym in the clubhouse.



PET-FRIENDLY ZONE



We understand that you love your pet unconditionally. At The Ananta Aspire a designated pet-friendly zone is awaiting your furry friend to enjoy its stroll. A happy home is incomplete without a happy pet!

ALL THE COMFORTS OF HOME AT ONE PLACE

Green Certified Building



Convenience Shops



Lounge Area



Billiards Room



Senior Citizens Area



Amphitheatre



Kids Play Area



Banquet Hall



Library



Salon & Spa



COSMIC BALANCE



At Ananta we understand the importance of wholesome living that is in harmony with the universe. Our logo, the Sri Yantra, which represents the cosmos and the human body, encompasses our wish for the residents at The Ananta Aspire to lead a life full of bliss and inner peace. Sri Yantra, which is understood to be the mother of all yantras, helps one to harness one's own energy as well as the cosmic energy.



ABOUT THE DEVELOPER

Team Ananta is driven by the desire to offer something new with each project. With The Ananta Aspire, our aim is not only to redefine a spacious and smart home but also provide a balanced and healthy lifestyle to its residents. And to achieve this, The Ananta Aspire team has worked passionately each day.

The Ananta Aspire is a new beginning to creating unending memorable moments.

PROJECTS & TIMELINE



ANANTA

2 & 3BHK
No. Flats 96
2016-2018

The premium residential project in the heart of Zirakpur. 96 meticulously designed homes surrounded by green landscape along with accessibility to all the major destinations.



ANANTA LIFESTYLE

3BHK
No. Flats 177
2018-2021

Zirakpur's first-ever smart homes project. 3BHK independent floor with all modern comforts and conveniences. Designed to explore the next level of blissful living.



THE ANANTA ASPIRE

3 & 4BHK
No. Flats 440
2022

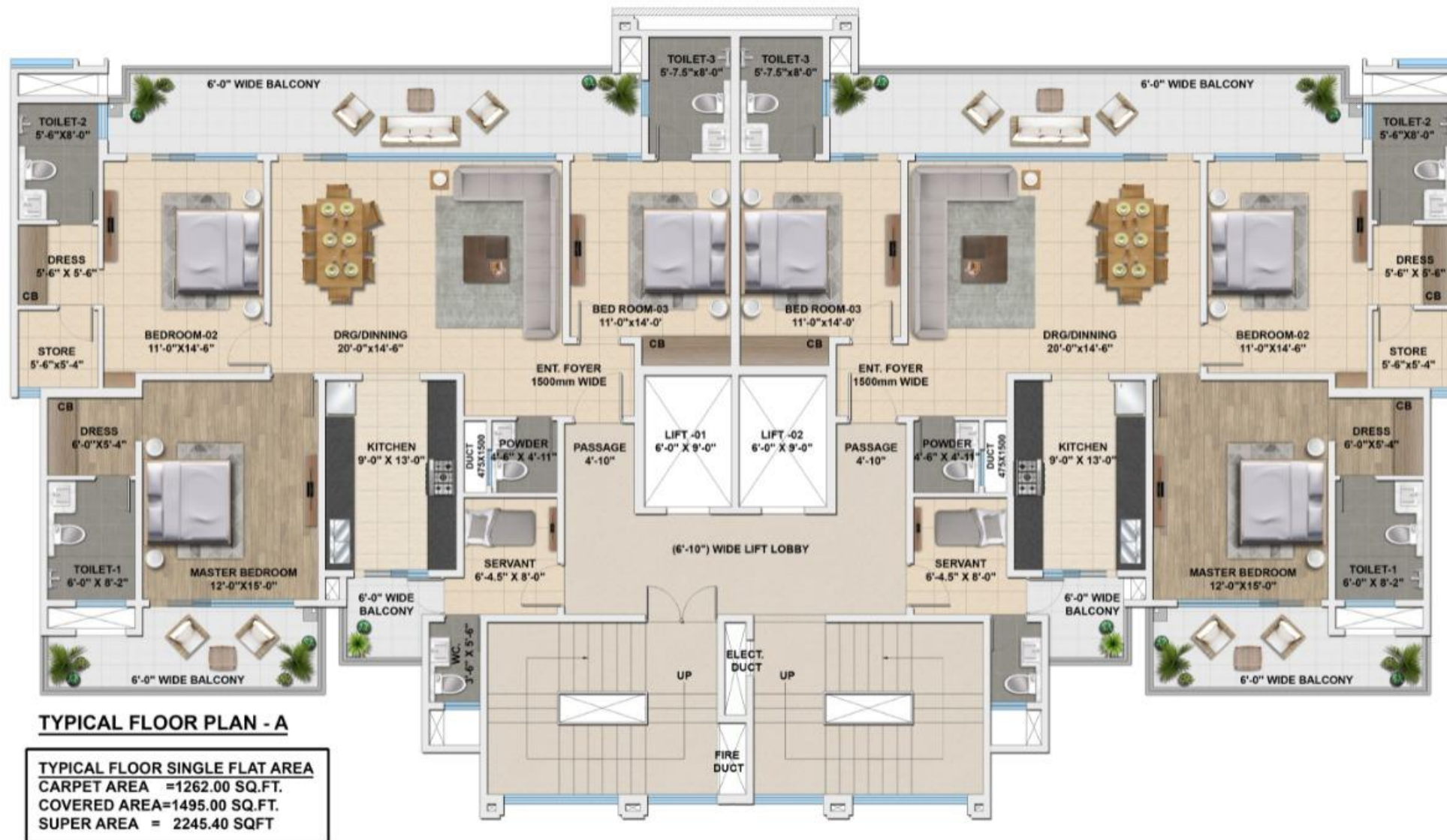
A smart, stylish, secure and serene apartment awaits you at Zirakpur's prime location. Get ready to rediscover endless possibilities to a good life!



TYPICAL FLOOR PLAN - B

TYPICAL FLOOR SINGLE FLAT AREA
CARPET AREA = 1060.00 SQ.FT.
COVERED AREA = 1220.00 SQ.FT.
SUPER AREA = 1830.00 SQFT

3 BHK FLOOR PLAN



3+1 BHK FLOOR PLAN



TYPICAL FLOOR PLAN - C

TYPICAL FLOOR SINGLE FLAT AREA
CARPET AREA =1869.00 SQ.FT.
COVERED AREA=2120.00 SQ.FT.
SUPER AREA = 2900.00 SQFT

4+1 BHK FLOOR PLAN

Live A Good Life!

NH – 7, Chandigarh Patiala Highway, Zirakpur, Punjab - 140603 | www.theanantaspire.com

Disclaimer: Nothing contained herein intends to constitute a legal offering and doesn't form part of any agreement or legal binding on The Ananta Aspire (PBRERA: SASXX-PCXXXXX) Information herein may contain technical inaccuracies or typographical errors. Company and its management hold no responsibility for its accuracy. All images (other than actual images) are merely artistic conceptualization and does not replicate the exact product and should not be relied upon as definitive reference.